



# Preschool For ALL FAQ's for Parents

## **What preschool program is being offered to children by Emmons and Grass Lake School Districts?**

The preschool program is endorsed by the state of IL and gives the two districts the ability to offer a half day, high quality preschool to all students living within the districts' boundaries. The program is based on best instructional practices and will feature two full time teachers and one paraprofessional serving up to 20 students in each preschool section. The program will support a morning and an afternoon preschool section.

## **Why is Emmons and Grass Lake partnering for preschool?**

By partnering together, Emmons and Grass Lake can provide the "gold standard" of preschool. Grass Lake already boasts a spacious and fully equipped preschool classroom as well as a specialized preschool playground. Emmons administration has 13 years' experience in designing and securing state funding for the Preschool for All program. By sharing cost and expertise, we can provide an even better program than we could separately.

## **Why does the program have two teachers?**

This is one of the most unique assets of the partnership! Two teachers will allow for all students to have their needs met. One of the teachers is certified in special education for early childhood and will be the expert in serving students with identified special needs. Though, both teachers will work together to support all students learning at their developmental level. This will give opportunities for students who are ready to take their learning further and for ones who need a little extra support!

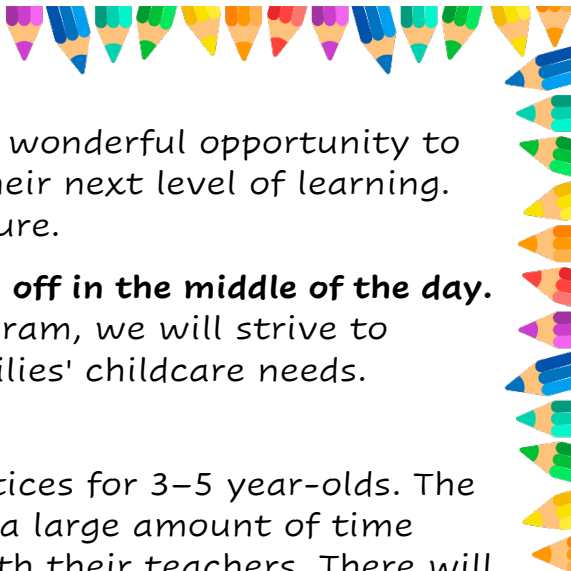
## **How does my child enroll in the program?**

Schedule an appointment for screening! All potential students will participate in the screening. The State of Illinois prioritizes preschool spots to students who have delays or are at risk of delays but will also accept any children who want to join. After screenings have been conducted, the students will be enrolled by need and a waiting list will be formed if necessary. Though we believe there will be enough spots for all interested families during this first year of the program.

## **What are the hours of the program?**

We will offer a morning session from 7:45- 10:15 and an afternoon session from 12:15-2:45. On Fridays, the afternoon session will begin at 10:45 and end at 1:15.





**But I don't think my child is ready for school.**

Your child is the perfect candidate! Preschool is a wonderful opportunity to get students interested in school and ready for their next level of learning. There is no such thing as not ready or too immature.

**I must work and can't pick my child up or drop them off in the middle of the day.**

As we continue to develop the PREK FOR ALL program, we will strive to partner with nearby daycares to support our families' childcare needs.

**What will the students learn in the program?**

The program will follow research based best practices for 3-5 year-olds. The lessons will be engaging, and students will spend a large amount of time learning through play, music, and interactions with their teachers. There will be gross motor play time as well. Lessons are based on the IL Early Learning and Development Standards. More information and a copy of the standards can be found [here](#).

**Will students eat during the program?**

Snacks will be provided and will follow the district's safe snack guidelines. Please notify staff of any food allergies your child has.

**How are the students assigned to the morning or afternoon sessions?**

After screenings are conducted, the preschool team will divide the students to form a variety in population characteristics to keep the classes balanced. Examples of factors which will be considered are boy/girl ratio, 3 & 4 year old mix, student needs. We will follow best practices for preschool which means that each session will have a mix of 3 & 4 year olds. This provides a great opportunity for the 4 years to become leaders and the 3 year olds to have role models!

**I don't think my child will separate from me to attend the program.**

Children do sometimes struggle with this transition, but the staff is equipped to handle this situation. Staff will provide care and comfort for your child. Also, sending your child with a special bracelet or other small object from home can help with the transition. The preschool team can support you and your child if a more involved plan is needed to help your child.

**How will my student receive their special education services (if applicable)?**

We will schedule service providers such as speech therapists and occupational therapists to deliver services during the program hours as much as feasible. You may be asked to bring your child to the school at different times if scheduling does not allow for that service during the program time. Every effort will be made to serve the special education needs during the program, but it is not guaranteed.





### **My child isn't potty trained, can he/she still attend?**

Yes, the staff will work with you to develop a plan for toileting needs. Please send your child in a pull-up and send extra pull-ups and wipes.

### **How will I know if my child is accepted into the program?**

After all the children have been screened, the screening team will total the results and place students in the program. Families will receive letters explaining if they are enrolled in the program or on the waitlist. Every effort will be made to allow all children to participate in the program.

### **What does the screening process look like?**

The screening process involves asking your child to perform small tasks that will look at areas such as speech, fine motor skills and academic readiness skills. Parents will also fill out questionnaires about their child so the evaluators will learn how their child functions at home and learn about the family.

### **How do I set up a screening for my child?**

A screening day is set for May 20, 2024, but we will continue to screen students past this date. Please call Grass Lake School to set a screening appointment time. The screening will take approximately half an hour.

### **I have additional questions, who do I talk to?**

Either school can assist you. Call Grass Lake School at 847-603-5150 or Emmons School at 847-395-1105.

